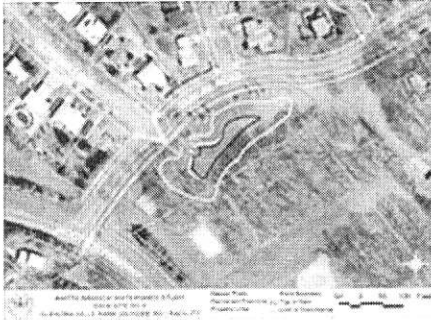


ROCKVILLE HOME

Watts Branch Watershed Study



Glenora Park

ID: SD-8**Type: Wet Pond****Drainage Area = 74 acres**

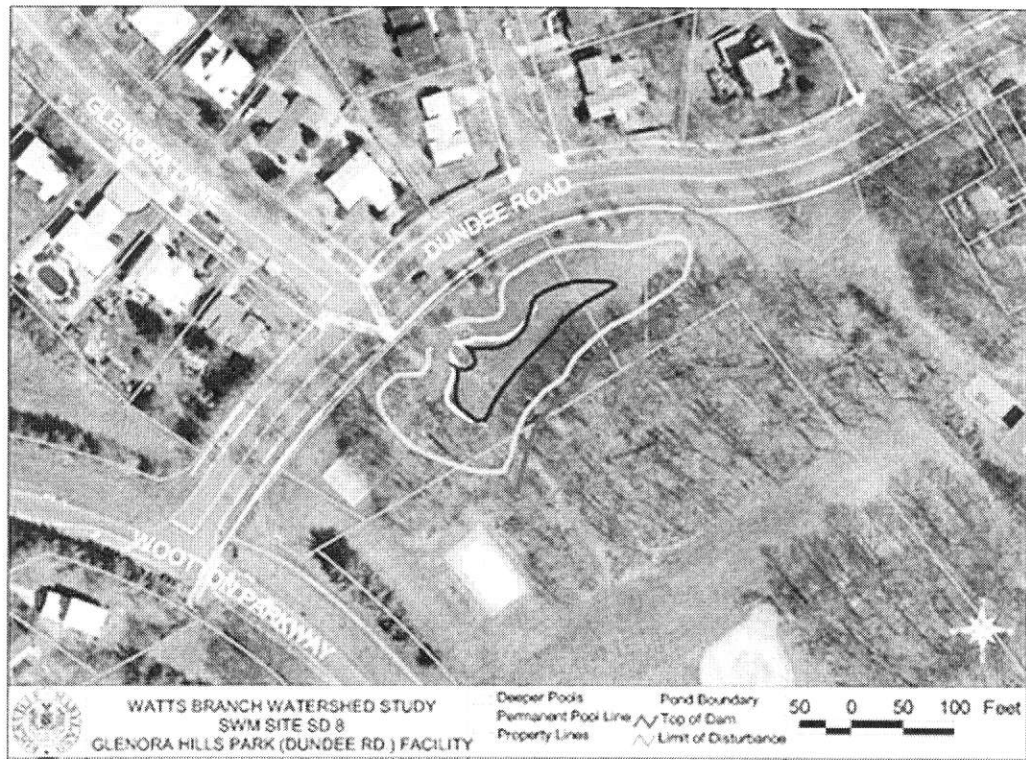
Click on the image to see an enlarged view.

Concept: This pond is sited in the open space in Glenora Park opposite Glenora Lane and Balmoral Drive. Three large storm drains outfall into the head of the stream through the park. The concept calls for a permanent wet pond of up to 5-feet deep on the stream channel and extending east by excavating the adjacent grass field. The new dam would cross the stream at the existing pedestrian bridge and run parallel to the current tree line. The side slopes of the pond could be replanted with grass, shrubs or trees, although no trees are allowed on the dam. A tot lot next to the stream will be replaced by the Parks Dept. this summer. If the SWM project is approved, the tot lot would be relocated to another site in Glenora Park, such as near the tennis courts, for safety reasons and to protect the tot lot from frequent flooding. Pond construction would coincide with the next projected replacement of the tot lot in 10 years.

Advantages: achieves full water quantity and substantial water quality control; provides good erosion protection to severely eroded channels immediately downstream; avoids most of the adjacent stream valley forest in the park

Disadvantages: replaces large grass play area and requires relocation of nearby tot lot; clears about 0.3 acres of forest; clearing may be visible from five houses; requires relocation of a sewer line

- ▶ [Watts Branch Partnership](#)
- ▶ [Contacts](#)
- ▶ [Meeting Information](#)
- ▶ [Watershed Study Timeline](#)
- ▶ [Watershed Study Overview](#)
- ▶ [Watts Branch Open House](#)
- ▶ [Proposed Watershed Improvements](#)
- ▶ [Glossary of Terms](#)



Click on the image to return to the main page.

ROCKVILLE HOME



Watts Branch Watershed Study

Watts Branch Watershed Study Timeline

Summer 1998

City Staff began meeting with a group of interested citizens and community representatives. From this group, the Watts Branch Partnership was founded.

Fall and Winter 1998

The Watts Branch Partnership defined the scope of the Watts Branch Watershed Study and worked with City Staff to select a consultant to conduct the study.

March 1999

The Center for Watershed Protection, the consultants selected by the Partnership, begins work on the study.

Spring and Summer 1999

Consultants conduct field investigations and collect data to document the current condition of the watershed and to identify problem areas.

Fall 1999

A Community Charette (a broadly attended planning meeting and group discussion) was held to discuss watershed needs, potential improvements and to create a list of promising sites for stormwater management and stream rehabilitation.

Winter 1999-2000

Consultants develop preliminary stormwater management and stream improvement ideas based on their research and input from the charette. The partnership meets to review the potential projects, offer suggestions for improvement, and discuss which projects should move forward to the engineering concept phase for more in-depth investigation.

Spring and Summer 2000

After responding to the initial comments of the partnership and City staff, consultants create engineering concept drawings and

computations on selected projects for further review by the partnership. City staff and partnership members begin informal presentations to community groups to explain problems in the watershed and to gather feedback on proposed concepts.

July and August 2000

The City of Rockville conducts the Watts Branch Open House, a standing display in City Hall describing the watershed study in detail. Staff is available to answer questions, and comments are submitted by the public.

September 2000

City staff reviews the comments of the public and the Watts Branch Partnership members. Revisions are forwarded to the consultants on all remaining concepts. A draft watershed management plan is prepared based on the results of the process so far.

Fall 2000

City staff and the partnership review the draft plan and make final comments and changes. The plan is referred back to consultants for final modifications.

January and February 2001

The final plan is presented to the City Council for review. The public may comment on the plan and present their opinions to the City Council. After the City Council has reviewed and modified the plan, it is adopted by the City Council.

July 2001

A 10-year process begins to implement the recommendations of the Watts Branch Watershed Management Plan.

Consultant

Center for Watershed Protection

-
- ☛ [Watts Branch Partnership](#)
 - ☛ [Contacts](#)
 - ☛ [Meeting Information](#)
 - ☛ [Watershed Study Timeline](#)
 - ☛ [Watershed Study Overview](#)
 - ☛ [Watts Branch Open House](#)
 - ☛ [Proposed Watershed Improvements](#)
 - ☛ [Glossary of Terms](#)
-

**[What's New](#) | [City Services](#) | [Mayor & Council](#) | [Boards & Commissions](#)
[City Projects](#) | [Calendar](#) | [Hot off the Press](#) | [Recreation & Parks](#) |**

Cliff M. Blondes

From: DJenkins@ci.rockville.md.us
Sent: Thursday, May 30, 2002 3:46 PM
To: De Jong, Tracy
Cc: BlondCB@Verizon-uc.com; gkbrooks@comcast.net; gr1723@msn.com; jngreenberg@earthlink.net
Subject: RE: Water Project for Glenora Park on Dundee

Ms. De Jong:

The Watts Branch Watershed Study, developed by the Watts Branch Partnership and City Staff, recommended a number of projects to the Mayor and Council to lessen stream erosion, remove pollutants from stormwater run-off, and restore aquatic habitat and stream quality. Recommendations that were adopted on August 6, 2001 as part of the Watts Branch Watershed Study and Management Plan included the creation of a new stormwater management pond in the open space at Glenora Park opposite Glenora Lane and Balmoral Drive. The concept calls for a permanent wet pond of up to 5 feet deep on the stream channel and extending east by excavating the adjacent grass field.

The Glenora Park pond is a key project for the Watts Branch management plan, both because of the relatively large drainage area it will control, and because it is needed to combat severe erosion downstream. Stormwater management allows less intrusive restoration techniques to be used, and helps protect stabilization while the bank plantings take root. If the stormwater project is approved, the tot lot would be located to another site. At the design stage, staff will work with the community and recreation and Parks to identify alternate recreation opportunities, such as an acceptable site within the park to relocate the tot lot.

The Watts Branch management plan will be approximately implemented over a ten-year span. The management plan is the first step in the life of the individual projects ? each one will be included in the Capital Improvement Program and will go through a final design stage with its own public information meetings and notices. During the final design stage, there will be several opportunities for fine-tuning each project. The Glenora Pond design stage will begin FY 2009/FY 2010 and until then no one is making any decisions regarding this project.

To learn more information about the Watts Branch Watershed Study and Management Plan, please visit the City's website at www.ci.rockville.md.us and click onto "City Project Update". You can also contact Lise Soukup, Project Manager, at 301-309-3217 or Bo Ferguson, Project Implementation Coordinator, at 301-315-6507.

Thanks!

Dwayne B Jenkins
Neighborhood Resource Coordinator
City of Rockville
djenkins@ci.rockville.md.us
301.309.3247
301.251.9968 fax